

## Early Years Project - London Borough of Brent

### Aims

The aims of the Early Years Project in Brent are to establish the provision of nurseries, child minders and out of school care

- Analyze gaps and overlaps in the system at neighbourhood level
- Identify wider access issues e.g. to public transport
- Analyze the availability early years services to key users

### What we did

We integrated data from general practice registers, the local property gazetteer, early years data from educational services, council tax and other information.

The data were matched and geo-referenced at household level. The information was then analyzed at a geographical level to determine levels of access, gaps, over and under capacity by neighbourhood and locality.

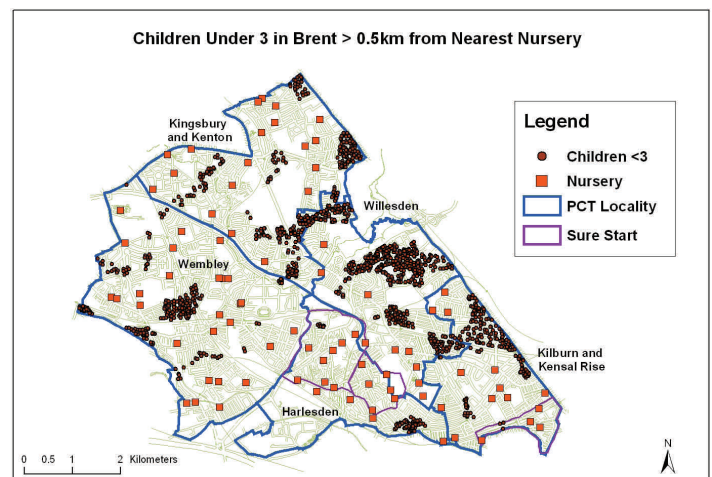
Summary tables were produced to show which group of the population had least access (see table).

For the benefit of working parents we also established levels access between nurseries and public transport.

On the basis of this analysis we were able to identify shortfalls in capacity in specific areas by opening times, geographic access, nursery types, and alternatives such as child minders. We also looked at breakfast clubs and out of school care.

### Outputs

The information forms the basis for an on going implementation of the Brent Early Years Service Strategy, the goal of which is to give every child the best possible start in life and give all vulnerable children the care and protection they need. Specific uses of the information includes the development and location of children's centres, and capacity and equity audits of different children services in the Borough. More widely the information is being used to analyse foundation data in order to further identify children's needs in specific educational and socio-economic settings.



Map showing location of existing nurseries and children who live more than a 10-minute walk to the nearest nursery

Locality	number of children aged under 3	% living >0.5kms from a nursery	Of which		
			% single adult households	% living in social housing	% living in tax bands A-C
A	2081	3.6	37.8	32.4	67.6
B	1944	12.3	25.4	34.6	40.4
C	1800	18.7	14.6	9.5	19.0
D	3018	10.2	16.9	8.8	41.6
E	1982	37.0	22.8	16.3	33.9
Total	10825	15.6	21.1	16.9	34.8

Table showing nursery access for under 3s according to housing status

*Tailoring services to local needs*