

Youth Offending - Camden Primary Care Trust

Aims

Part of the Local Area Shared Information Resource initiative (LASIR), the aims of this project were to:

- link data on crime, education and housing to produce risk profiles of areas containing potential youth offenders
- identify key risk factors associated with different types of crime
- provide local information that would form the basis of a Youth Crime Reduction Strategy.

What we did

We obtained household level data from several sources including the police, education, social services and housing.

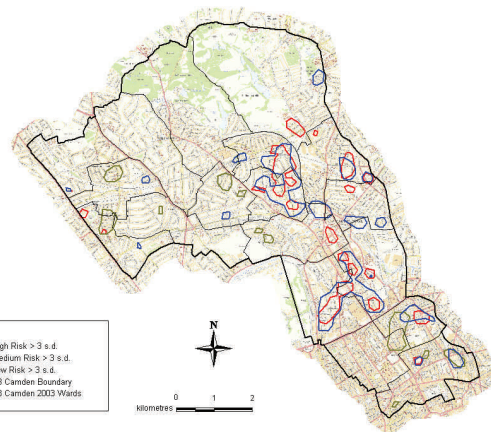
The data were matched and geo-referenced at household level. The information was then analyzed at a geographical level to determine areas of high, medium and low risk.

Summary tables were produced to show the numbers of youths at risk according to different combinations of risk factors such as record of previous offending, housing tenure and income levels (see summary table example).

On the basis of this analysis we were able to identify and profile areas according to potential levels of criminality.

Outputs

Numerous detailed risk tables and risk maps were produced for different crime types and then subdivided into gender and age groups. The results were compared with national studies on youth crime and the differences were highlighted. The partners in the project including the Primary Care Trust (which had an interest in drug rehabilitation), the Metropolitan Police, the London Borough of Camden and the Local Strategic Partnership (LSP). The results were widely discussed and the findings were incorporated into Camden's Youth Crime Reduction Strategy.



Risk map showing areas of high, medium and low potential criminality based on the distribution of key risk factors

Number of risk factors	Addresses at which there is an offender	Number of addresses with given risk factors	Offender risk %
0	318	79,761	0.4
1	539	36,747	1.5
2	230	3,804	6.1
3	152	1,989	7.6
4	28	186	15.1
5	1	5	20.0
Total/mean	1,268	122,492	1.0

Table showing the association between the number of offenders and number of addresses where given risk factors were present

Tailoring services to local needs