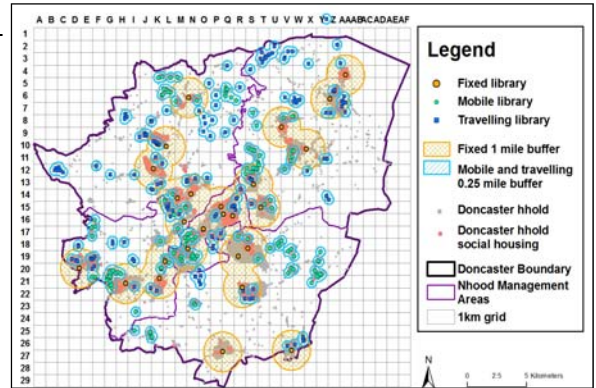




## Access to libraries - Doncaster

### Aims

Doncaster MBC and Doncaster PCT, using neighbourhood renewal funding, commissioned Mayhew Associates (MA) to undertake a detailed assessment of population and deprivation in Doncaster. Based on administrative data sources, MA *nkm techniques* were used to estimate the Doncaster population. The resulting database was used to study access to libraries, either fixed or mobile and travelling, for all Doncaster households, to assess which groups may be disadvantaged.



Map showing all libraries and associated buffers for households in Doncaster

### What we did

In partnership with the PCT and local authority, we obtained and linked data from each agency to the Local Property Gazetteer. We then risk assessed all households using the following risk factors: aged 65 and over, living alone, children in household and social housing tenure. We mapped the density of people with the highest risk profiles so as to enable the PCT to identify the areas and sub-groups most at risk of admission (see map).

*Tailoring services to local needs*

Row	households in category	Household with person 65+	living alone	household with children (<20)	Living in social housing	> 1 mile from fixed library	lower confidence limit	upper confidence limit	Row	households in category	household with person 65+	living alone	household with children (<20)	Living in social housing	> 0.25 mile from mobile or travelling library	lower confidence limit	upper confidence limit
1	977	Y		Y		21.9	19.3	24.6	1	632		Y	Y		54.6	50.6	58.5
2	15219	Y				20.0	19.3	20.6	2	17688		Y			54.4	53.7	55.2
3	26482					19.2	18.7	19.7	3	977	Y		Y		53.4	50.2	56.6
4	32429			Y		16.6	16.2	17.0	4	10441	Y	Y			52.0	51.1	53.0
5	10441	Y	Y			16.1	15.4	16.8	5	26482					51.2	50.6	51.8
6	17688		Y			13.4	12.9	13.9	6	15219	Y				50.4	49.6	51.2
7	632		Y	Y		12.8	10.3	15.7	7	32429			Y		49.7	49.1	50.2
8	174	Y		Y	Y	8.0	4.5	13.1	8	6174			Y	Y	43.4	42.2	44.7
9	2760	Y			Y	7.9	6.9	8.9	9	133		Y	Y	Y	42.1	33.6	51.0
10	2474				Y	6.7	5.8	7.8	10	3510		Y		Y	40.7	39.1	42.4
11	3510		Y		Y	6.3	5.5	7.2	11	174	Y		Y	Y	40.2	32.9	47.9
12	5578	Y	Y		Y	6.2	5.6	6.9	12	2474				Y	40.0	38.1	42.0
13	6174			Y	Y	5.3	4.7	5.9	13	2760	Y			Y	34.1	32.4	35.9
14	133		Y	Y	Y	4.5	1.7	9.6	14	5578	Y	Y		Y	33.3	32.1	34.5
15	0	Y	Y	Y					s15	0	Y	Y	Y				
16	0	Y	Y	Y	Y				16	0	Y	Y	Y	Y			
total	124671	35149	37982	40519	20803	15.4	15.2	15.6	total	124671	35149	37982	40519	20803	28.8	15.2	15.6

Risk factor segmentation of Doncaster households according to access to a) fixed libraries and b) mobile or travelling libraries

### Outputs

For fixed libraries, the average of 15.4% > 1 mile from a library reduces to < 10% for social housing, and increases to 21.9% for older people in private tenure. Our multiple regression model shows that living in social housing increases the odds x times of living near a fixed library whereas older residents are 2.4 times more likely to be further than a mile from one. An average of 28.8% households are > 0.25 miles from a fixed or travelling library meaning access is generally good. This rises to 54.6% for those living alone. Overall, both types of library offer the best geographical access to social housing households, policy may already be successful for this groups and need to broaden to consider other household types.