



Ethnicity in the London Borough of Greenwich

Aims

One of the key aims from the estimation of the residential population in Greenwich was to understand better the ethnic composition of the borough, from both an analysis of broad categories of ethnic groups (e.g. White, Black, Asian, Mixed and other) and also an analysis of people from specific ethnic backgrounds (e.g. Nigerian, Somalian, Nepalese, Vietnamese, White Eastern European).

What we did

Mayhew Harper Associates Ltd created a database of the confirmed minimum residential population in Greenwich by matching administrative data from Greenwich council and the primary care trust and linking it to the Local Land and Property Gazetteer using the Neighbourhood Knowledge Management, *nkm*, methodology. We then assigned actual ethnicity (to those listed on Greenwich's School Pupil Census) and an ethnic probability, where possible, to each other person on the *nkm* database, based on our database of over 1m surnames.

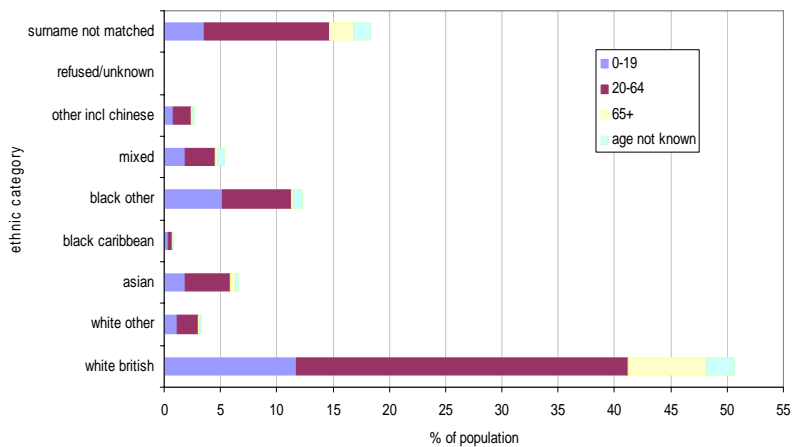


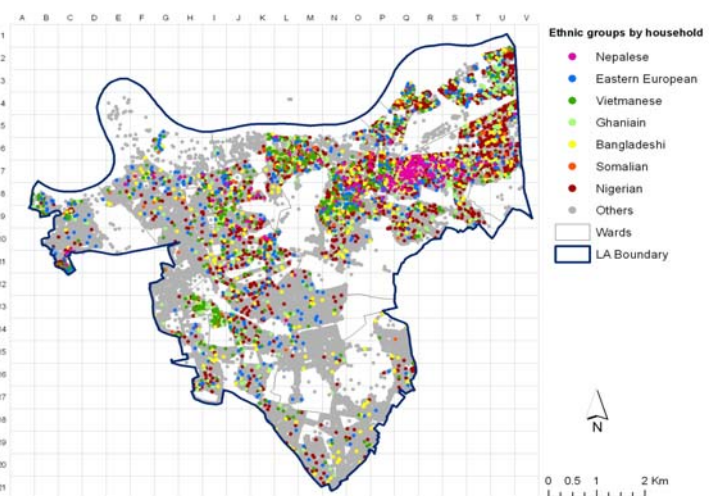
Chart showing the % of the total population by age group and ethnicity

Outputs

Ethnicity was able to be assigned to over 80% of the total residential population of 240k. Of those assigned an ethnicity White British accounted for just over half of the population (53.5% of households) followed by Black (other) at 12.3% (9.4% of households) and Asian at 6.6% (4.8% of households).

There are clear age differences between ethnic groups, e.g. of White British 13.7% are aged 65+ as compared with only 0.2% in the cases of Black (other). Conversely 41.8% of the Black (other) population is aged 0-19 as compared with only 23.3% of the White British population.

The analysis was extended to investigate nine specific countries of origin, which accounted for 9% of the total population. Nigerians were by far the largest group, followed by those from Somalia, Bangladesh, Ghana and Vietnam. White Eastern Europeans (including Kosovans and Albanians) and Nepalese were the smallest of the groups analysed. Geographical analysis showed that Nigerians have a very high concentration towards the north east corner of the borough whereas the distribution of Somalians and White Eastern Europeans mirrored that of the overall population.



Dot map showing households by ethnicity

Tailoring services to local needs

NEIGHBOURHOOD KNOWLEDGE MANAGEMENT

Mayhew Harper Associates Ltd
www.nkm.org.uk
email: lesmayhew@googlemail.com

