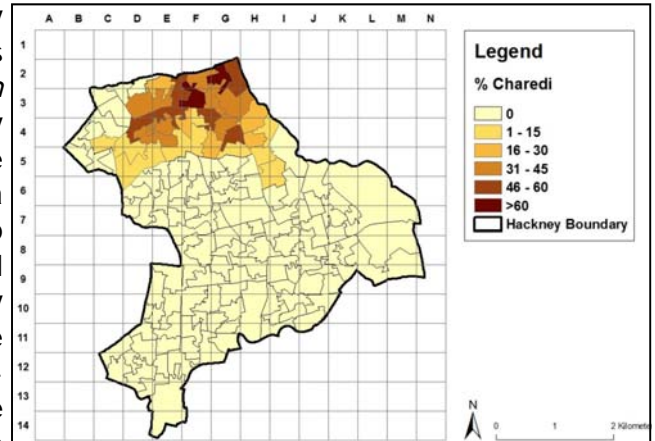


Charedi Population in Hackney

Aims

The London Borough of Hackney asked Mayhew Harper Associates to extend their existing *nkm* population estimation of Hackney to also estimate the size of the Hackney Charedi community, a sizeable Jewish Orthodox group which has settled in Hackney and neighbouring Haringey over many years. This was to demonstrate distinctive communities in Hackney and to take advantage of the administrative data techniques that can profile such a community that otherwise is hidden within aggregate official statistics.



Map 1: Charedis as a percentage of the local population by SOA in Hackney

What we did

The publicly available Shomer Shabbos directory was used as the starting point for estimating the size of the Charedi population in Hackney. This lists only the head of household, so further administrative sources were used to determine other residents at these addresses using *nkm* techniques, and

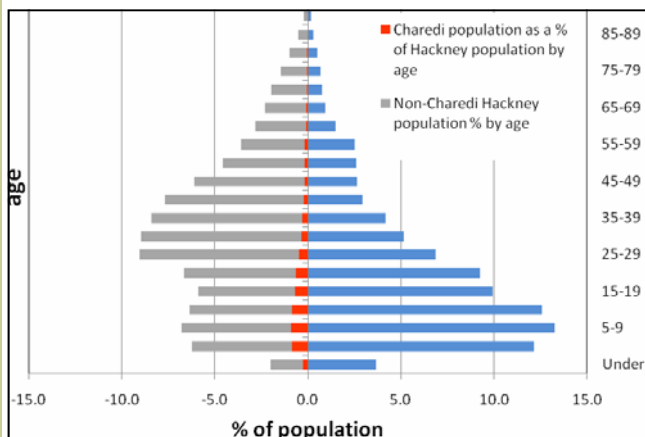


Figure 1: Hackney population pyramid

therefore the full Charedi community by age, gender, location and household socio-economic factors such as tenure, occupancy and take up of means tested benefits.

Outputs

The analysis showed that the Charedi community numbers about 15k (6.9% of the population see figure 1) and is concentrated in the northern tip of the borough (see map 1). 4 out of 5

Charedi households are in Hackney and the rest in neighbouring Haringey. This community tends to have a higher ratio of males and also a higher % of young people and families than in Hackney generally. We noted that Charedi households are more likely to need benefits and have large families but at the same time tend not to live in social housing or single adult households. For example, occupancy per address is 6.3 persons compared with the Hackney average of 2.3 persons. This information gives indications of proportionately greater needs for certain services such as child care, primary and secondary education, and children's health services. The analysis can be used as such to inform and guide service planning.

*Tailoring
services to local
needs*